

# CORPORATE FASHION

Leisure, Club and Hobby



JAMES &  
NICHOLSON  
*by daiber*

# ALL THE ADVANTAGES AT A GLANCE

An overview of the numerous functions of our articles

The central image shows a white polo shirt with a red 'daiber' logo on the chest. Surrounding the shirt are ten red circular icons, each with a white graphic and text describing a feature:

- ORGANIC COTTON\***: Icon of a cotton plant.
- EASY CARE\***: Icon of a washing machine.
- FREEDOM OF MOVEMENT**: Icon of a person with arrows indicating movement.
- NON IRON\***: Icon of a flat iron.
- SUITABLE FOR DECORATING**: Icon of a needle and thread.
- RECYCLED POLYESTER\***: Icon of a t-shirt with a recycling symbol.
- UP TO 42 COLOURS\***: Icon of a paint palette.
- BREATHABLE\***: Icon of a person with arrows indicating air flow.

## Corporate Fashion

JAMES &  
NICHOLSON  
*by daiber*



# WE CONNECT BRANDS WITH PEOPLE. OUR PRODUCTS CREATE IDENTITY.



Corporate identity is guaranteed with **corporate fashion**. Apart from strengthening your public image, it reinforces the sense of togetherness within the team. Be it staff or club member, corporate fashion unites people and therefore, each individual becomes a **brand ambassador**.

The brand **James & Nicholson by Daiber** offers a **functional design** with a **huge variety of colours and sizes**, which is long-term available, and the brand is perfect for your strong team appearance.

## 4 Steps to Corporate Fashion

**STEP 1** Select article



From head to toe, from function jacket to T-shirt matching in colour. A **wide colour range** and a **variety of models** make for a well-rounded corporate outfit for every company.

**STEP 2** Personalization



**Every article of our collections is suitable for a convincing decoration.** Print or embroidery – Your logo is definitely the centre of attention. Individualization is the key.

**STEP 3** Positioning of the logo



**Where do you want your advertising message to be?** Our experts will advise you personally on the best position for your logo or slogan.

**STEP 4** Just order



Order via the **contact details** on the reverse of the catalogue.

## Our recommendations for you

We have put together a selection for you from the extensive JAMES & NICHOLSON by Daiber range. We will be happy to advise you on other products.

### T-Shirts & Polos

pp. 6-11

PROMO-T GIRL • BOY •  
LADY • MAN 150



LADIES' • MEN'S • CHILDREN  
ACTIVE-T



LADIES' • MEN'S • CHILDREN  
BASIC-T



LADIES' • MEN'S  
ACTIVE POLO



LADIES' • MEN'S  
BASIC POLO



LADIES' • MEN'S  
ACTIVE TANKTOP



### Sweaters & Hoodies

pp. 12-15

LADIES' • MEN'S  
PROMO SWEAT



LADIES' • MEN'S  
SWEAT



LADIES' • MEN'S  
PROMO HOODY



LADIES' • MEN'S • CHILDREN  
ZIP HOODY



FULL-ZIP FLEECE





**OVERVIEW**

**Jackets & Vests**

pp. 16-19

**LADIES' • MEN'S HOODED SOFTSHELL JACKET**



**LADIES' • MEN'S HOODED JACKET**



**LADIES' • MEN'S SOFTSHELL JACKET**



**LADIES' • MEN'S ALLWEATHER JACKET**



**Shirts & Blouses**

pp. 20-21

**LADIES' • MEN'S SHIRT SHORTSLEEVE POPLIN**



**Caps & Beanies**

pp. 22-25

**6 PANEL RAVER CAP**



**5 PANEL POLYESTER MESH CAP**



**5 PANEL CAP**



**Accessories**

pp. 26-27

**HAND TOWEL**



**PROMOTION HAT**



**SANDWICH SUNVISOR**



**KNITTED CAP**



**ECONOMIC X-TUBE POLYESTER**





# T-SHIRTS & POLOS





**8007** XS-XXL

**8008** S-3XL

**8007G** XS-XXL

**8008B** XS-XXL



**8007** Ladies' Basic-T

**8008** Men's Basic-T

**8007G** Girls' Basic-T

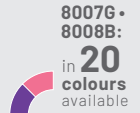
**8008B** Ladies' Basic-T

**Ladies' T-shirt in classic form**

100 % combed ring-spun organic cotton, single jersey • Low cut round neckline • Cuffs with elastane • Lightly waisted • Tear off!® - Label

**Outer fabric (140 g/m<sup>2</sup>):** 100 % cotton

**8007: Outer fabric (120 g/m<sup>2</sup>):** 100 % cotton



**8009** S-XXL

**8010** S-3XL



**8009** Ladies' Basic Polo

**8010** Men's Basic Polo

**Classic poloshirt**

Fine piqué made of 100 % combed ring-spun organic cotton • Knitted polo collar and sleeve cuffs • Buttons tone in tone, side slits • Tear off!®-label • 8009: waisted, 4 buttons • 8010: 2 buttons

**Outer fabric (180 g/m<sup>2</sup>):** 100 % cotton



# T-SHIRTS & POLOS

- JN744** XS-XXL
- JN745** XS-XXL
- JN746** XS-3XL
- JN797** S-5XL



- JN744** Promo-T Girl 150
- JN745** Promo-T Boy 150
- JN746** Promo-T Lady 150
- JN797** Promo-T Man 150

**Classic T-shirt**

Single jersey, round neck, collar with elastane • Tear off®-label • JN746: lightly waisted, with side seam • JN797: without side seam

**Outer fabric (150 g/m<sup>2</sup>):** 100 % cotton



- JN719** XS-3XL
- JN720** S-3XL



- JN719** Ladies' Active Polo
- JN720** Men's Active Polo

**Polo shirt made of functional polyester for promotion, sports and leisure**

Breathable, moisture-regulating and quick-drying • Knitted polo collar, neck tape, buttons tone in tone • Tear off®-label • JN719: 5 buttons, lightly waisted • JN720: 3 buttons

**Outer fabric (170 g/m<sup>2</sup>):** 100 % polyester









# T-SHIRTS & POLOS

**JN357** XS-3XL

**JN358** S-3XL

**JN358K** M-XXL



**JN357** Ladies' Active-T

**JN358** Men's Active-T

**JN358K** Active-T Junior

**Functional T-shirt for leisure time and sports**

Fine single jersey • Neck tape • Twin needle stitching on shoulders, neck- and armlines • Breathable, moisture-adjusting • Fast-drying • JN357: waisted form

**Outer fabric (150 g/m<sup>2</sup>):** 100 % polyester



**JN737** XS-XXL

**JN738** S-3XL



**JN737** Ladies' Active Tanktop

**JN738** Men's Active Tanktop

**Functional top for leisure time and sports**

Fine single jersey • Neckline and armline with a narrow border • Breathable, moisture-regulating, quick-drying • JN737: lightly waisted

**Outer fabric (150 g/m<sup>2</sup>):** 100 % polyester









# SWEATERS & HOODIES





**JN793** XS-3XL

**JN794** S-5XL



**JN793** Promo Sweat Lady

**JN794** Promo Sweat Men

Round neck sweatshirt with raglan sleeves for ladies

Sweat fabric with roughened inside • Neck tape, cuffs with elastane • JN793: Lightly waisted • Tear off®-label

Outer fabric (280 g/m<sup>2</sup>): 80 % cotton, 20 % polyester



**8021** XS-3XL

**8022** S-5XL



**8021** Ladies' Sweat

**8022** Men's Sweat

Classic sweatshirt with raglan sleeves

High-quality French terry, 85 % combed ring-spun organic cotton • Classic round neck, necktape • Collar and cuffs with elastane • Collar patch • Tear off!-label • 8021: lightly waisted

Outer fabric (300 g/m<sup>2</sup>): 85 % cotton, 15 % polyester





# SWEATERS & HOODIES

- JN795** XS-3XL
- JN796** S-5XL
- JN796K** XS-XXL



- JN795** Promo Hoody Lady
- JN796** Promo Hoody Man
- JN796K** Promo Hoody Children

**Classic hooded sweatshirt**

Sweat fabric with roughened inside • Two-layer hood with drawcord • Kangaroo pocket, neck tape • Cuffs with elastane • Tear off®-label • JN795: lightly waisted

**Outer fabric (280 g/m<sup>2</sup>):** 80 % cotton, 20 % polyester



- 8025** XS-3XL
- 8026** S-5XL
- 8026K** XS-XXL



- 8025** Ladies' Zip Hoody
- 8026** Men's Zip Hoody
- 8026K** Children's Zip Hoody

**Hooded sweat jacket with zip**

High-quality French terry • 85 % combed ring-spun organic cotton • Two-layer hood with drawcord • Lateral dividing seams at the front, kangaroo pocket • Cuffs with elastane • YKK-zip • Tear off!®-label • 8025: lightly waisted • 8026K: without cord • XS: 98/104 • S: 110/116 • M: 122/128 • L: 134/140 • XL: 146/152 • XXL: 158/164

**Outer fabric (300 g/m<sup>2</sup>):** 85 % cotton, 15 % polyester





**JN044** S-4XL  
**JN044K** XS-XXL



**JN044** Full-Zip Fleece  
**JN044K** Full-Zip Fleece Junior

**Jacket made of heavy fleece**

Easy care anti-pilling fleece • Stand-up collar, twin needle stitching on armlines and shoulders • Elastic cuffs • JN044, JN044K: 2 side pockets with zippers • XS: 98/104 • S: 110/116 • M: 122/128 • L: 134/140 • XL: 146/152 • XXL: 158/164

**Outer fabric (300 g/m<sup>2</sup>):** 100 % polyester





# JACKETS & VESTS





**JN1143** XS-XXL

**JN1144** S-3XL



## **JN1143** Ladies' Hooded Jacket

## **JN1144** Men's Hooded Jacket

**Hooded jacket with fashionable details in melange look**

Pleasant, elastic Interlock • Adjustable hood • Sewn-on zipped kangaroo pocket • Zips: YKK • Casual cut • JN1143: lightly waisted

**Outer fabric (380 g/m<sup>2</sup>):** 92 % polyester, 8 % elastane



**JN1179** XS-XXL

**JN1180** S-3XL



**SOFT SHELL**



## **JN1179** Ladies' Allweather Jacket

## **JN1180** Men's Allweather Jacket

**Light, lined outdoor softshell-jacket for extreme weather conditions**

Functional material made of recycled polyester with TPU-membrane • Wind- and waterproof (10,000 mm water column) • Breathable and permeable to water vapour (5,000 g/m<sup>2</sup> / 24 h) • Taped seams, waterproof zips • Light mesh • Full-length under-panel 2-way zip with chin protection • 2 side pockets, 1 inner pocket • Fully adjustable hood • Hook and loop fastener for width adjustment on sleeves • Ergonomic fit, extended back section • Fashionable reflective details on the sleeves and at the back • Zip for decoration at the back • JN1179: Lightly waisted • Zips: YKK

**Outer fabric (140 g/m<sup>2</sup>):** 100 % polyester (recycled)

**Lining:** 100 % polyester (recycled)



# JACKETS & VESTS

**JN1145** XS-XXL

**JN1146** S-3XL



**JN1145** Ladies' Hooded Softshell Jacket

**JN1146** Men's Hooded Softshell Jacket

**Hooded softshell jacket in sporty design**

2-ply softshell with contrasting inside in mesh look • Elastic waistband and sleeve cuffs • Water- and dirt-repellent due to BIONIC-FINISH®ECO • Sewn-on zipped kangaroo pocket, 1 inner pocket • Adjustable hood • YKK-zips • JN1145: lightly waisted

**Outer fabric (260 g/m<sup>2</sup>):** 94 % polyester, 6 % elastane



**JN137** S-XXL

**JN135** S-3XL

**JN135K** M-XXL



**JN137** Ladies' Softshell Jacket

**JN135** Men's Softshell Jacket

**JN135K** Softshell Jacket Junior

**Trendy softshell jacket**

Functional 3-layer-fabric with TPU membrane • Wind-proof, breathable and water-proof (5,000 mm water column) • Non-taped seams • Inside made of micro fleece, mesh lining at the front • 2 zipped side pockets, Zip in front lining for embroideries • JN135: 1 vertical breast pocket with zip • JN137: Slightly waisted • JN135K: Fashionable, reflective piping at the front, back and on the sleeves • M: 122/128 • L: 134/140 • XL: 146/152 • XXL: 158/164

**Outer fabric (330 g/m<sup>2</sup>):** 95 % polyester, 5 % elastane









# SHIRTS & BLOUSES

**JN679** XS-3XL

**JN680** S-4XL



**EASY CARE**

**OEKO TEX®**  
15.0.70467  
Hohenstein HTTI  
STANDARD 100

**JN679** Ladies' Shirt Short-sleeve Poplin

**JN680** Men's Shirt Short-sleeve Poplin

**Classic shirt made of easy care mixed fabrics**

Poplin with easy care finish • Rounded hem • JN679: Waisted, feminine cut • JN680: Classic fit, lightly waisted, breast pocket 12 x 14 cm, pleats on rear yoke

**Outer fabric (105 g/m<sup>2</sup>):** 65 % polyester, 35 % cotton



in **20**  
colours  
available

**JN641** XS-3XL

**JN642** S-6XL



**EASY CARE**

**OEKO TEX®**  
15.0.70467  
Hohenstein HTTI  
STANDARD 100

**JN641** Ladies' Business Shirt Long-Sleeved

**JN642** Men's Business Shirt Long-Sleeved

**Classic shirt made of durable mixed fabrics**

Easy care poplin with easy care finish • Rounded hem • Washable at 60 °C • JN641: Waisted, feminine cut • JN642: Classic fit, lightly waisted, breast pocket 12 x 14 cm, pleats on rear yoke

**Outer fabric (105 g/m<sup>2</sup>):** 50 % cotton, 50 % polyester



in **11**  
colours  
available







# CAPS & BEANIES

SINCE 1912  
**daiber**  
CORPORATE FASHION





**MB6111** one size  
**MB7010** one size



**MB6111 6 Panel Raver Cap**  
**MB7010 5 Panel Kids' Cap**

**Trendy children's cap with a large peak**

4 embroidered ventilation holes • 6 decorative stitching lines on the peak • Size: 54 cm / from the age of 4 • Low profile • Padded satin sweat band • Matching adults' cap ref. MB6111 • Hook and loop fastener • Heavy brushed cotton

**Outer fabric (350 g/m<sup>2</sup>):** 100 % cotton



**MB070** one size  
**MB071** one size



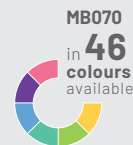
**MB070 5 Panel Polyester Mesh Cap**

**MB071 5 Panel Polyester Mesh Cap for Kids**

**Trendy 5 panel mesh cap in many colour combinations**

6 stitching lines on the peak • Size: 54 cm/ from the age of 4 • Fashion sweatband • Matching adults' cap ref. MB070 • Size-adjustment by 'click & snap' fastener

**Outer fabric: (350 g/m<sup>2</sup>):** 100 % polyester



**MB6117** one size



**MB6117 5 Panel Cap**

**5 panel cap with unbrushed surface**

4 embroidered ventilation holes • 6 stitching lines on the peak • Laminated front panel • Padded satin sweatband • Hook and loop fastener

**Outer fabric (190 g/m<sup>2</sup>):** 100 % cotton





# CAPS & BEANIES





**MB6625** one size



### MB6625 Promotion Hat

Light hat in numerous colour shades

Honeycomb design • Without hatband, matching hatband MB6626 for individual combination options • Brim: width 4.5 cm, with trim tape • Pleasant to wear due to woven sweatband • One size fits all (58 cm)

Outer fabric: 100 % polyester



**MB6626** one size



### MB6626 Ribbon for Promotion Hat

Hatband in various colours

Width: 2.5 cm • Matching Promotion Hat MB6625

Outer fabric: 100 % polyester



**MB6123** one size



### MB6123 Sandwich Sunvisor

Trendy sunvisor with contrasting sandwich

3 decorative stitching lines on the peak • Hook and loop fastener • Brushed cotton

Outer fabric: (180 g/m<sup>2</sup>): 100 % cotton



**MB7500** one size

**MB7501** one size



### MB7500 5 Panel Cap

### MB7501 5 Panel Cap

Classic knitted cap in a lot of colours

Twin layer knitting • Matching children's cap ref. MB7501

Outer fabric: 100 % polyacrylic

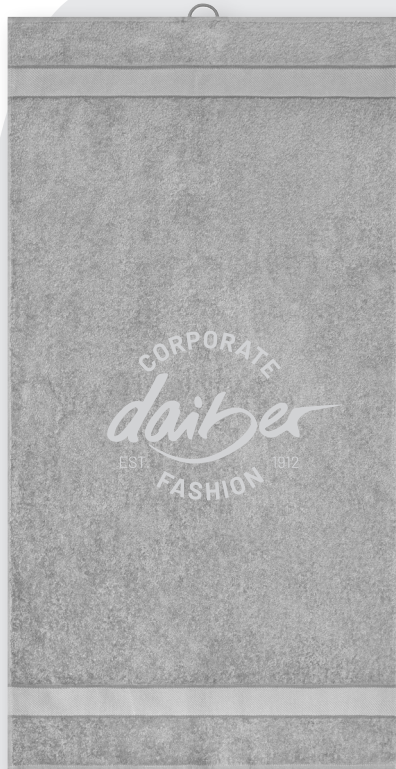




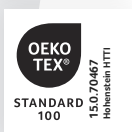
# ACCESSORIES

**MB442** one size

**MB443** one size



Contains 100%  
Organically Grown Cotton  
Certified OCS by CURE3836



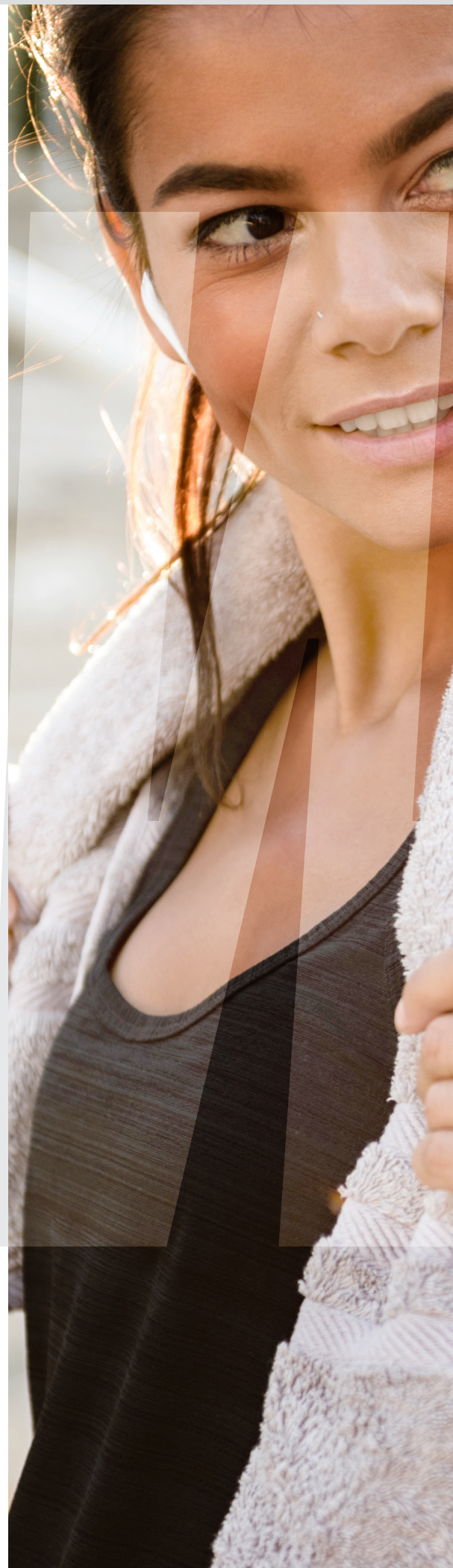
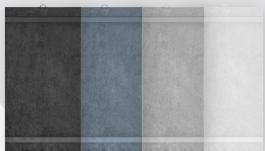
**MB442** Hand Towel

**MB443** Bath Towel

**Towel in fashionable design**

Pleasantly soft cotton terry, combed ring-spun organic-cotton •  
Optimum absorbency • Selection of fashionable, bright colours •  
MB442: 50 x 100 cm • MB443: 70 x 140 cm

**Outer fabric (420 g/m<sup>2</sup>):** 100 % cotton







**MB6503** one size

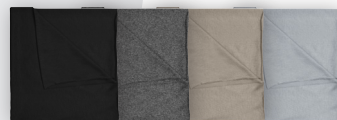


### **MB6503** Economic X-Tube Polyester

**Multi-functional tube that can be worn in 12 different ways**

Size: approx. 25 x 50 cm

**Outer fabric (120 g/m<sup>2</sup>):** 100 % polyester





# ***CORPORATE FASHION***

**Leisure, Club and Hobby**

EN



EN // Stand 03/2024



**JAMES &  
NICHOLSON**  
*by doityer*